

Lindsell Train Global Equity B GBP

Fund Information

Launch Date	16/03/2011
Sector	IA Global
Domicile	Ireland
Benchmark	MSCI World index (Developed Markets)
Currency	GBP
Price (Bid/Mid) (as at 03/06/2020)	£3.88
Manager name	Michael Lindsell, James Bullock, Nick Train
Fund Size	£7853.00m at 29/05/2020
Number of Holdings	N/A
Yield	N/A
Dividend dates	01/01/2020, 01/07/2019
ISIN	IE00B3NS4D25
CitiCode	NBH5
Legal Structure	OEIC

Top Holdings % (as at 29/02/2020)

UNILEVER	8.49
HEINEKEN HLDG NV	7.65
DIAGEO	7.49
LONDON STOCK EXCHANGE GROUP	7.32
NINTENDO CO	5.14
KAO CORP	5.01
SHISEIDO CO	5.01
PAYPAL HLDGS INC	4.92
RELX NV	4.88
PEPSICO INC	4.85

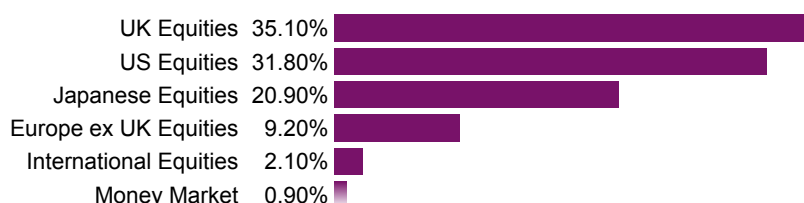
Ratings



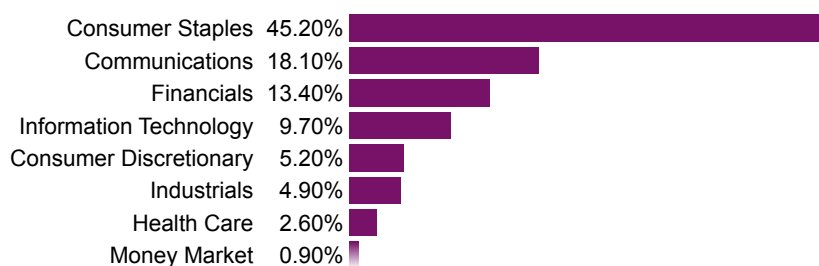
Fund Objective

To increase the value of Shareholders' capital over the longer term from a focused portfolio of global equities, primarily those listed or traded on Recognised Exchanges in developed countries world-wide. The Fund's investment performance is compared with the MSCI World Index (Developed Markets) and is reported in Sterling.

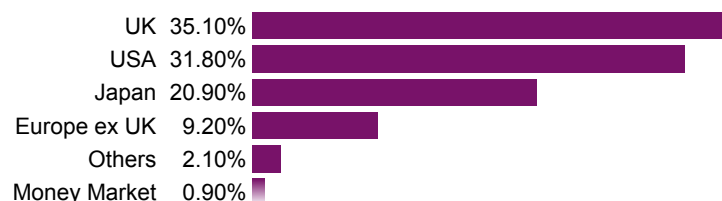
Asset Breakdown (as at 29/02/2020)



Sector Breakdown (as at 29/02/2020)



Region Breakdown (as at 29/02/2020)



The value of investments can go down in value as well as up, so you could get back less than you invest. It is therefore important that you understand the risks and commitments. This website aims to provide information to help you make your own informed decisions. It does not provide personal advice based on your circumstances. If you are unsure of how suitable an investment is for you, please seek personal advice from independent financial adviser.

Lindsell Train Global Equity B GBP

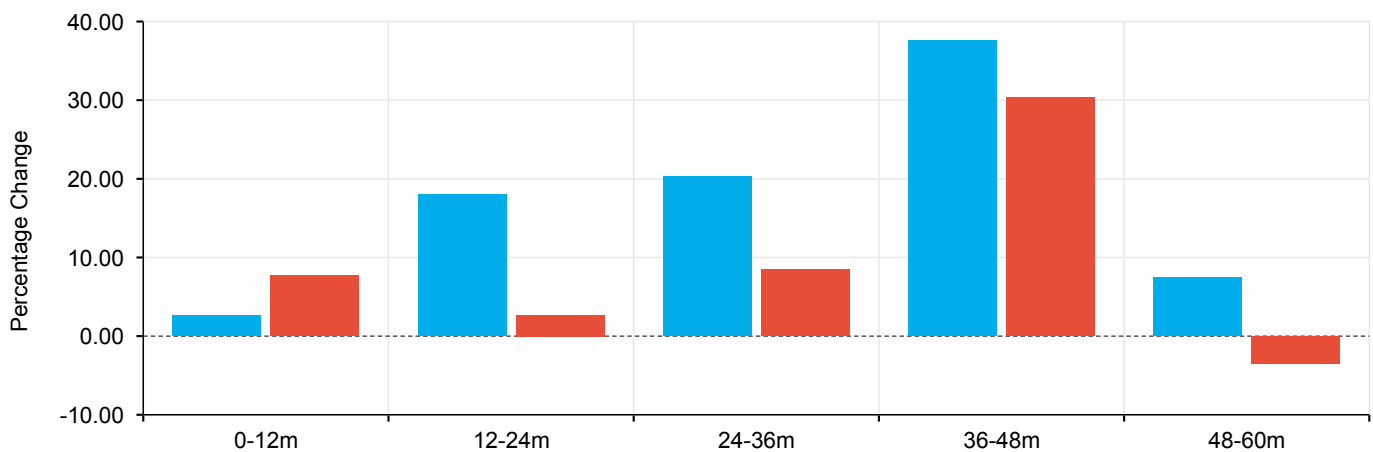
Cumulative Performance (%) (as at 29/05/2020)

	3m	6m	1yr	3yrs	5yrs	10yrs	Since launch
Lindsell Train Global Equity B GBP	10.73	1.88	2.67	45.75	115.51	N/A	322.23
IA Global	4.82	-0.56	7.68	19.91	50.88	138.95	N/A



Discrete Performance (%) (as at 29/05/2020)

	0-12m	12-24m	24-36m	36-48m	48-60m
Lindsell Train Global Equity B GBP	2.67	17.99	20.31	37.59	7.47
IA Global	7.68	2.68	8.45	30.37	-3.48



The value of investments can go down in value as well as up, so you could get back less than you invest. It is therefore important that you understand the risks and commitments. This website aims to provide information to help you make your own informed decisions. It does not provide personal advice based on your circumstances. If you are unsure of how suitable an investment is for you, please seek personal advice from independent financial adviser.

The percentage change shown is correct to two decimal places. In some instances funds may be shown as increasing or decreasing in value with a 0.00% change. This shows where a increase or decrease of less than 0.005% has occurred.

Performance figures are calculated on a bid to bid basis and shown in Pounds Sterling. It is important to know that unit prices reflect the value of the underlying assets of the funds and so can go down as well as up.

Past performance is not indicative of future performance. Where a fund invests in overseas securities, the unit prices may also rise and fall purely on account of exchange rate fluctuations.